

Public Schools - Parent Involvement

Current State Challenges

~89,000

Public
Schools in
the United
States



50 Million

enrollments in
elementary and
secondary schools
annually

17.5%

of students live
below poverty level

Parental
involvement
has **largest**
impact during
elementary
years



65%

of parents would
like to be **more**
engaged in child's
education



1 in 4 school aged
children is foreign born or
the child of foreign born
parents

47%

of foreign born parents have
Limited English Proficiency



50%

of students with
parents who did not
speak English had a
parent attend a
school event



78%

of students with
parents who did
speak English had a
parent attend a
school event

8%

of teachers noninstructional
work hours is spent on
communicating with parents

=



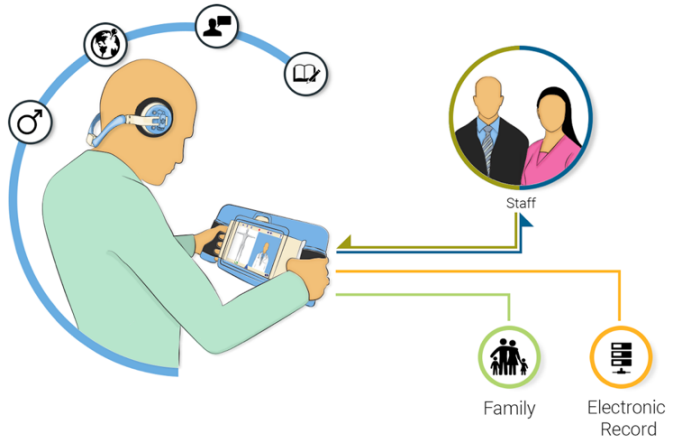
per week

Phrazer Enabled Parent Engagement

The Solution

Phrazer enables equitable and efficient engagements across a diverse community population. With Phrazer, parents are engaged equally for a deeper involvement in the students learning development. Staff is provided key information via Multi-Path Real-Time Messaging (MRM) and electronic records are populated accurately.

Phrazer's CITE Methodologies support students' individualized learning with attention arresting and relevant engagements.



Phrazer Program

Phrazer offers any CITE engagement in any language including:

- Enrollment Process
- Immunization History
- Student Health Conditions
- Parent Education
- Sight Words (student)
- Parent Engagements
- Weekly Goal Assessment
- Parent-Teacher-Conference

Benefits

The Phrazer System utilizes novel CITE Methodologies and patented features offering the following benefits:

- Equal and Effective Parent Involvement
- Platform for Innovation
- Individualized Learning
- Secure Connection to Electronic Record
- Consolidation of Point Solutions
- Operationalization of Previously Challenging Processes